



Smiles on Wheels

ACCESS TO DENTAL HYGIENE CARE

501(c)(3)

KINDERGARTEN ORAL HEALTH ASSESSMENT
2022-2023 IN JACKSON COUNTY



MICHIGAN KINDERGARTEN
ORAL HEALTH ASSESSMENT PROGRAM

The logo features a stylized graphic of a tooth or smile, composed of blue and green wavy lines, positioned above and below the text. The entire logo is enclosed in a thin green rectangular border.

Smiles on Wheels

122 Highland Drive, Jackson, Michigan 49201 (517)740-7422 info@smilesonwheels.org

Smiles on Wheels Mission Statement: *To improve the public's total health, thereby increasing the awareness of and ensuring access to quality oral health care.*

Vision Statement: *To serve those in need.*

Smiles on Wheels (SOW) is a non-profit mobile hygiene program comprised of Registered Dental Hygienists and coordinators, operating under Public Act 161 of 2005.

The program is focused on providing preventive oral health care services in schools, and other nontraditional settings.

In 2006, three hygienists had a vision to bring oral health care to those in underserved populations. Services include; dental cleanings, dental assessments, fluoride treatments, dental sealants, and oral health education.

Smiles on Wheels

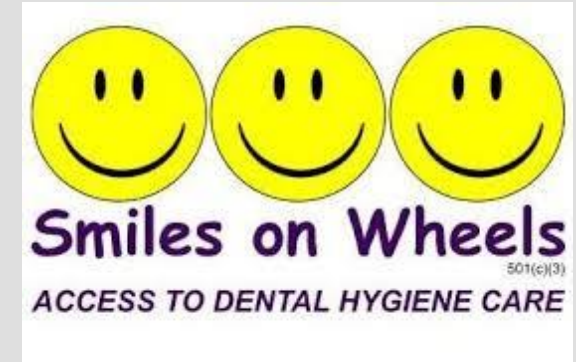
122 Highland Drive, Jackson, Michigan 49201 (517)740-7422 info@smilesonwheels.org

Smiles on Wheels Mission Statement: *To improve the public's total health, thereby increasing the awareness of and ensuring access to quality oral health care.*
Vision Statement: *To serve those in need.*

- Since its founding in 2006, Smiles on Wheels has surpassed the mark of serving over **30,000 children** in need in over **150 schools across Michigan, with 100 in the Lower Peninsula.**
- Smiles on Wheels partnered with the Michigan Department of Health and Human Services in 2007, under the SEAL! Michigan Program, has placed approximately **85,000 sealants** on children in Michigan in efforts to prevent tooth decay.
- Smiles on Wheels also provides oral health services to several GSRP and head start preschool programs located throughout Southeastern Michigan. Dental care is also provided to WIC families in Jackson and Lenawee counties where local health departments do not have a dental clinic.

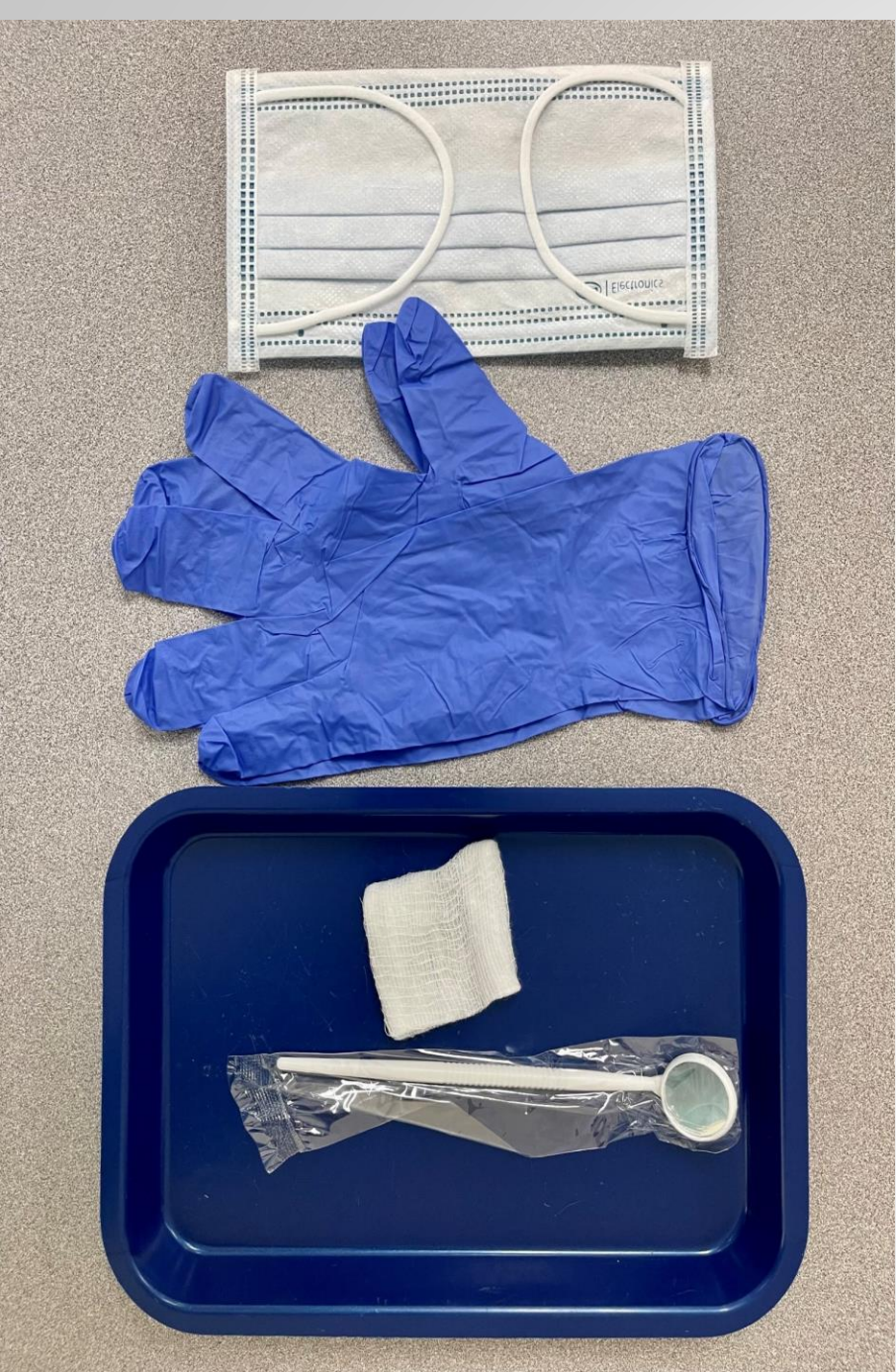
In July 2022, the SOW Kindergarten Oral Health Assessment (KOHA) program was developed and implemented.

The program, in partnership with the Jackson County Health Department, has completed 47 site locations from July 2022-April 2023.

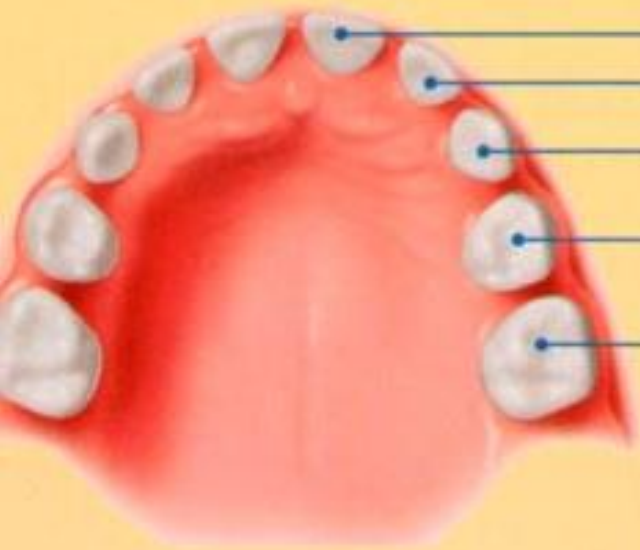


2022-23 Jackson County Summary Data

- **1651** assessments completed
- **30%** dental decay/disease rate
- **29%** referrals given for needed care, including **34** urgent cases involving infection, pain or rampant decay



Primary Teeth



Upper Teeth	Erupt	Shed
Central incisor	8-12 mos.	6-7 yrs.
Lateral incisor	9-13 mos.	7-8 yrs.
Canine (cuspid)	16-22 mos.	10-12 yrs.
First molar	13-19 mos.	9-11 yrs.
Second molar	25-33 mos.	10-12 yrs.



Lower Teeth	Erupt	Shed
Second molar	23-31 mos.	10-12 yrs.
First molar	14-18 mos.	9-11 yrs.
Canine (cuspid)	17-23 mos.	9-12 yrs.
Lateral incisor	10-16 mos.	7-8 yrs.
Central incisor	6-10 mos.	6-7 yrs.

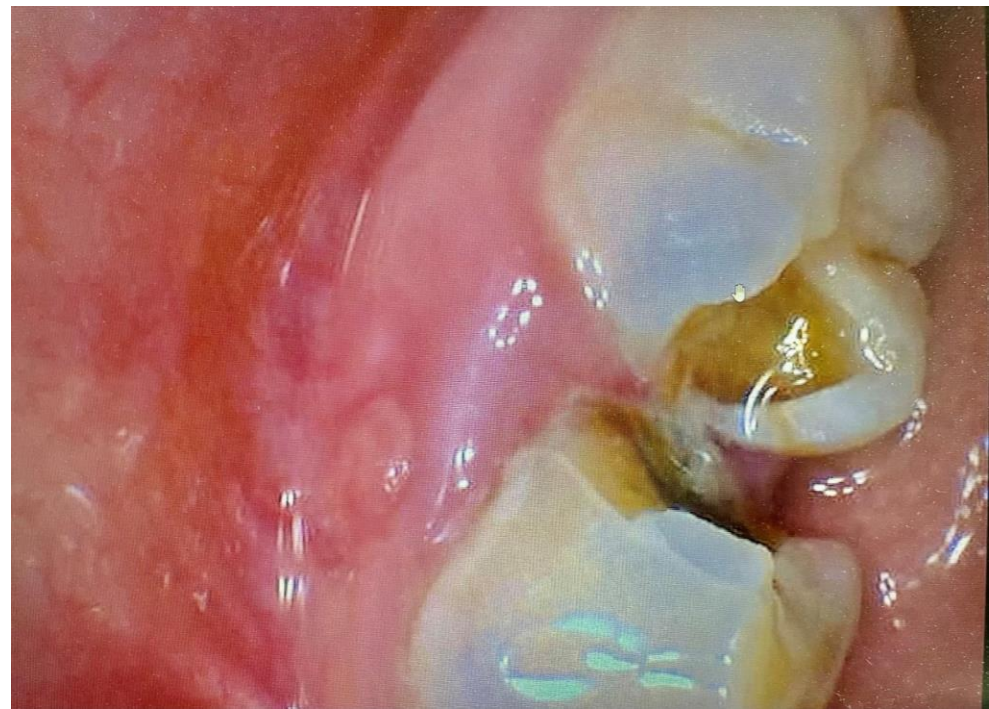
The succeeding photos will show decay in several different children ages 5-6 years old seen at our KOHA sites.

Front teeth are not lost until ages 7-8 years old. Back molars are not lost until ages 9-12 years old.











WE URGE YOUR SUPPORT
FOR SB 280 TO HELP
ENSURE A HEALTHY AND
SUCCESSFUL FUTURE FOR
MICHIGAN'S CHILDREN!

